

# UniCure

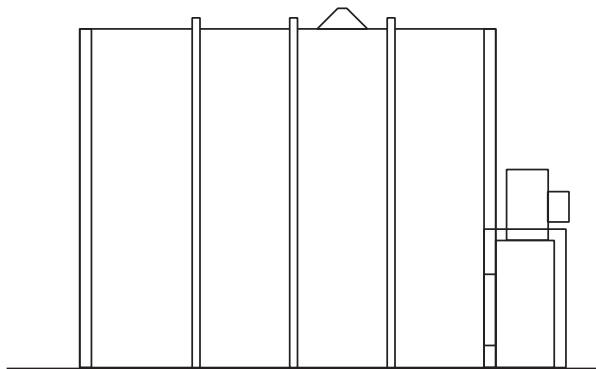
Spraybooths

## PAINT MIXING ROOM UMR456

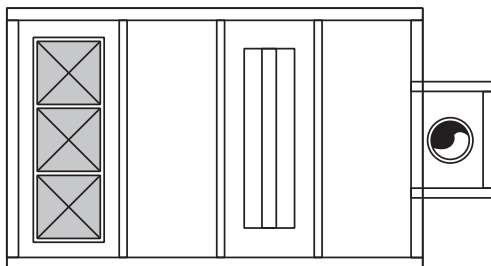
The *UniCure* Mixing Room is an important part of any collision repair shop.

The UniCure features a contaminate-free mixing operation. The bright, well-lit work area allows for accurate color mixing consistency. Modular design can satisfy particular location requirements. Sturdy design means quality construction.

***UniCure will special build  
any size.***



Side View



Top View

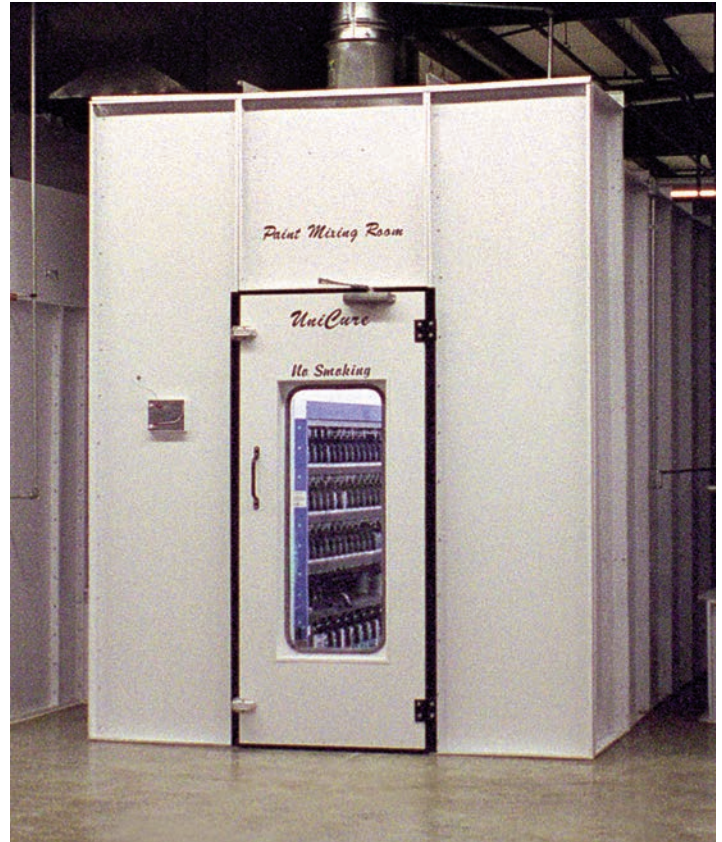
### Outside Dimensions

Length 11'-11"  
Width 6'-4"  
Height 8'-3"

### Inside Dimensions

Length 9'-8"  
Width 5'-10"  
Height 8'-0"

## American Made!



### Included:

- Galvanized Steel Panels
- Fasteners and Sealing Material
- Personnel Door
- 1-48" 4 Tube Light Fixture
- 1- Exhaust Fan and Motor
- Filters Intake/Exhaust

### Available Options:

- Powder Coating
- Windows
- Exhaust Ducting

*UniCure*  
Spraybooths

### INTERSTATE MARKETING CORPORATION

104 Spence Lane, Nashville, TN 37210

Your Collision Repair Equipment Headquarters

Call Toll Free: 1-800-868-3033 • TN (615) 889-3330

e-mail: unicure@spraybooths.com • www.spraybooths.com

---

# UniCure

## UMR-456 Paint Mixing Room

1. The mixing room construction and exhaust air flow velocities are designed to meet or exceed OSHA standards.
2. Standard exhaust system is furnished with a 12" diameter fan and open type motor.
3. This mixing booth is constructed of 18 gauge galvanized sheet steel, with interlocking flanges. Available in single or double wall construction. Unpainted or powder coated white.
4. Equipped with a 36" x 80" personnel access door. The door can be located on either side to meet user requirements.
5. Mixing rooms are furnished with one set of 20" x 20" x 2" ceiling filters and 20" x 20" x 2" exhaust filters.
6. The light fixture is 48" fluorescent 4 tube, 110/277 volt, 32 watt T8, UL approved. T8 light tubes are furnished with the fixture.